



Somerset Woods Trustees
PO Box 833
Skowhegan 04976



Lake Wesserunsett Association
PO Box 3101
Skowhegan, ME 04976

June 13, 2023

Dear Members:

As you know, Lake Wesserunsett is an important economic, recreational, and ecological resource for Madison and the broader region. Recently, Lake Wesserunsett Association (LWA), Skowhegan School of Painting & Sculpture (the Art School), and Somerset Woods Trustees (SWT) joined together with a shared interest in protecting the health of Lake Wesserunsett. Our partnership has already resulted in the conservation of critical wetlands at the north end of the lake.

Now, we are reaching out to members and friends like you with an interest in Lake Wesserunsett, because we want you to know about the exciting work we are doing to protect the watershed. Put simply, a watershed is a land area that funnels all the snowmelt and rainwater that falls on it to the same place (like Lake Wesserunsett). For Lake Wesserunsett, the watershed encompasses more than 15 square miles! A map of the watershed is included on the reverse side of this letter.

Lake Wesserunsett Association is a volunteer-run nonprofit that works to preserve and protect the lake and its watershed. Somerset Woods is a local, nonprofit land trust that has been conserving land in Somerset County since 1927. The Art School has been an important lake resident for decades. We are working together because permanent land conservation is an effective tool for protecting water quality and the lake ecosystem.

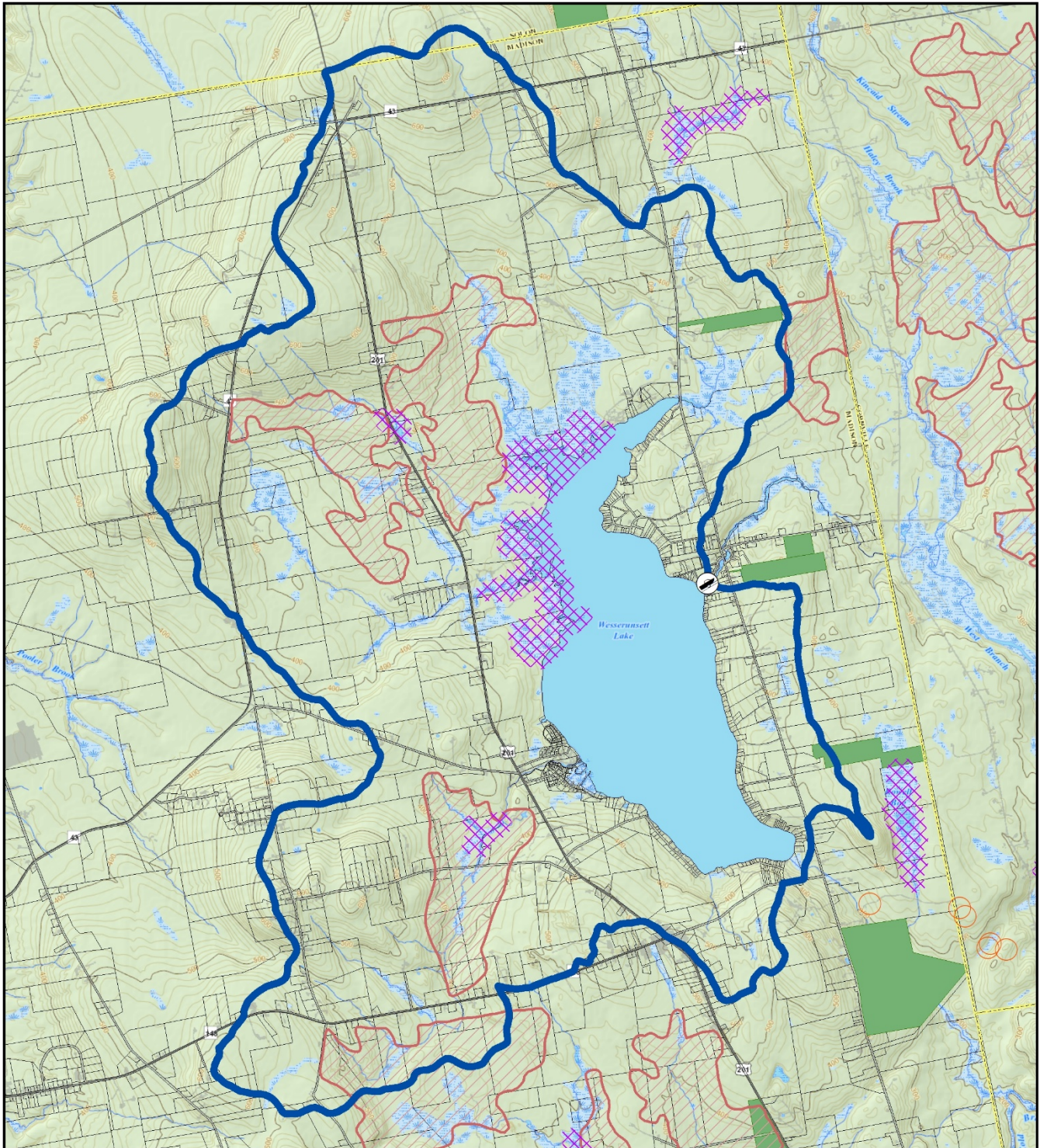
We invite you to join us at 7 PM Wednesday, June 21 at the Skowhegan School of Painting & Sculpture or on Zoom for a gathering of LWA members, watershed landowners and other interested folks. We will share information about how land conservation can help protect the lake and the different conservation options available. We will also celebrate the partnership's first project: the conservation of an important parcel on the north end of the lake! **To RSVP and/or request a Zoom link, please go to <https://www.wesserunsett.org/events>**

If you cannot attend on June 21 but wish to learn more, please do contact us. We are happy to provide information and answer questions you may have about the lake and the collaborative work we are doing to protect this important regional resource.

Sincerely,

Jennifer Brockway, Executive Director
Somerset Woods Trustees
207.679.7306 / SomersetWoodsTrustees@gmail.com

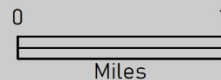
Mark Doty, President
Lake Wesserunsett Association
207.612.1174 / hello@lakewesserunsett.org



Wesserunnett Lake Watershed

Rise & Shine Consulting

-  Watershed
-  Conserved Lands
-  Parcels
-  Boat Launch
-  Inland Waterfowl and Wading Bird Habitat
-  Vernal Pools
-  Deer Wintering Areas



Mapping: Center for Community GIS
 Data Sources: Beginning with Habitat, MEGIS
 Date: January 2022